
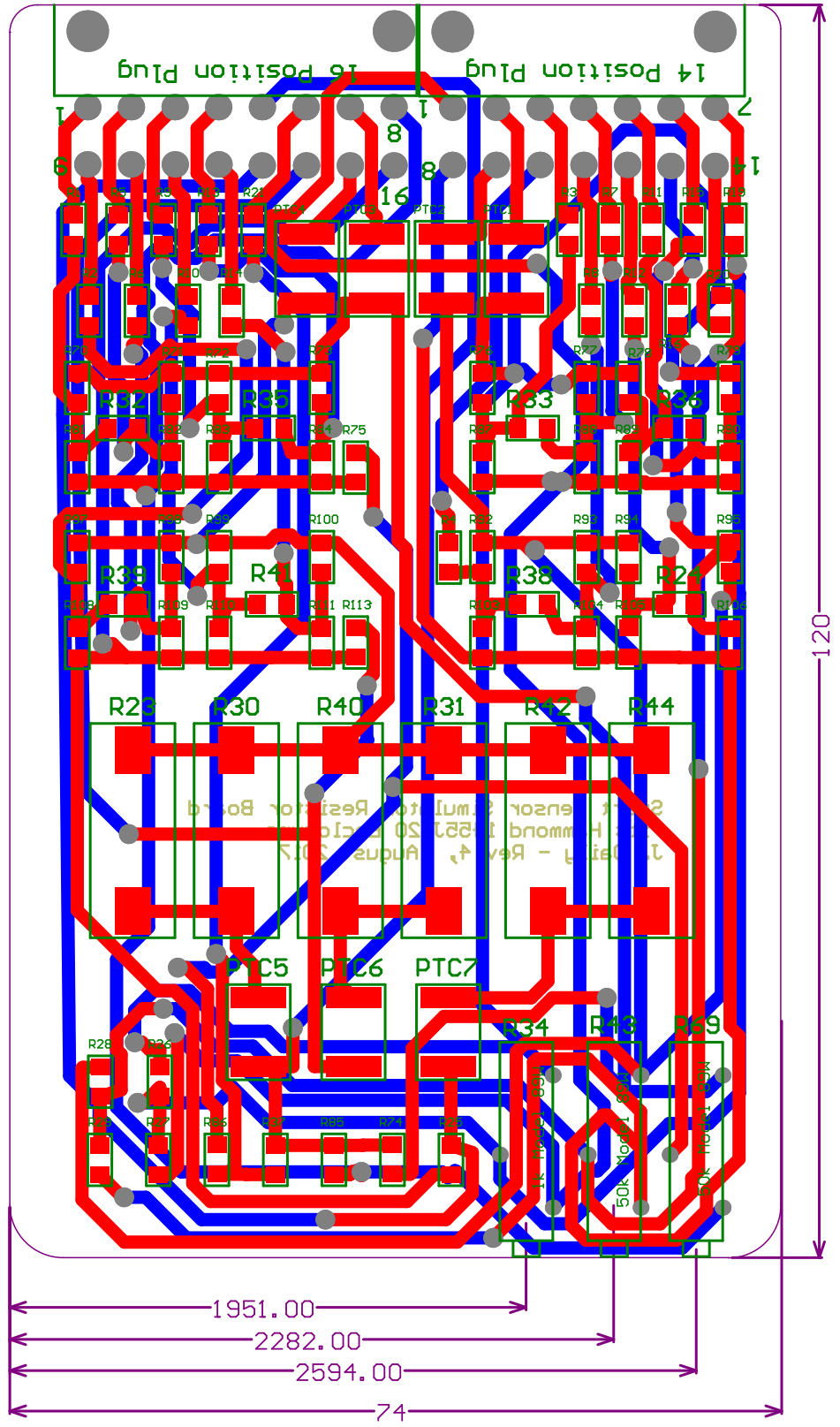


Title: <b>Resistor Board</b>		Dr. Jeremy Daily Mechanical Engineering The University of Tulsa 800 S. Tucker Dr Tulsa, OK 74104		
Subtitle: Fixed Resistors for the SSS2		Revision: 4		
Date: 8/20/2017	Time: 5:00:08 PM	Size: Letter	Sheet 1 of 1	
File: C:\Users\dailyadmin\Dropbox (JHSI)\Electronics\Resistor Box\Resistor Box for SSS Rev4.SchDoc				



Item #	mn Name Error:Manufa	#Column Name Error:Manufacturer No	Quantity	#Column Name Error>Note	Designator	Description	Footprint	Comment	LibRef
1			1		R34	Potentiometer	Trimmer Pot 89W	89WR1KLF	RPot
2			2		R43, R69	Potentiometer	Trimmer Pot 89W	89WR50KLF	RPot
3			6		R23, R30, R31, R40, R42, R44	±5% 5W Chip Resistor 5329 (13573 Metric), J-Lead Flame Retardant Coating, Safety Wirewound	SM_5	5W 1 ohm	Chip Resistor
4			7		PTC1, PTC2, PTC3, PTC4, PTC5, PTC6, PTC7	Polymeric PTC Resettable Fuse 24V 1h Surface Mount 2920 (7351 Metric), Concave	2920	PTC Fuse 24V 3A	PTC
5			3		R26, R27, R41	±5% 0.667W, 2/3W Chip Resistor 1206 (3216 Metric) Automotive AEC-Q200, Pulse Withstanding Thick Film	1206	1.5k	Chip Resistor
6			3		R28, R29, R75	RES SMD 200 OHM 5% 3/4W 1206	1206	100k	Chip Resistor
7			7		R72, R73, R74, R78, R90, R108, R109	±5% 0.667W, 2/3W Chip Resistor 1206 (3216 Metric) Automotive AEC-Q200, Pulse Withstanding Thick Film	1206	150	Chip Resistor
8			15		R25, R36, R77, R81, R82, R85, R86, R87, R93, R95, R103, R105, R110, R111, R113	±5% 0.667W, 2/3W Chip Resistor 1206 (3216 Metric) Automotive AEC-Q200, Pulse Withstanding Thick Film	1206	200K	Chip Resistor
9			6		R24, R32, R33, R35, R38, R39	±5% 0.667W, 2/3W Chip Resistor 1206 (3216 Metric) Automotive AEC-Q200, Pulse Withstanding Thick Film	1206	6.2	Chip Resistor
10			17		R37, R70, R71, R76, R79, R83, R84, R88, R89, R92, R94, R97, R98, R99, R100, R104, R106		1206	DNP	Chip Resistor
11			19		R1, R2, R3, R4, R5, R6, R7, R8, R9, R10, R11, R12, R13, R14, R15, R16, R19, R20, R21	Polymeric PTC Resettable Fuse 24V 1h Surface Mount 1206 (3216 Metric), Concave, Long Side Terminals	1206	PTC	Res2
12			1		J16		16 pos Mini-Fit Jr. R/A Header	16 Pos Mini-Fit Jr.	16 Pos Header
13			1		J14		14 pos Mini-Fit Jr. R/A Header	14 Pos Mini-Fit Jr.	14 Pos Header